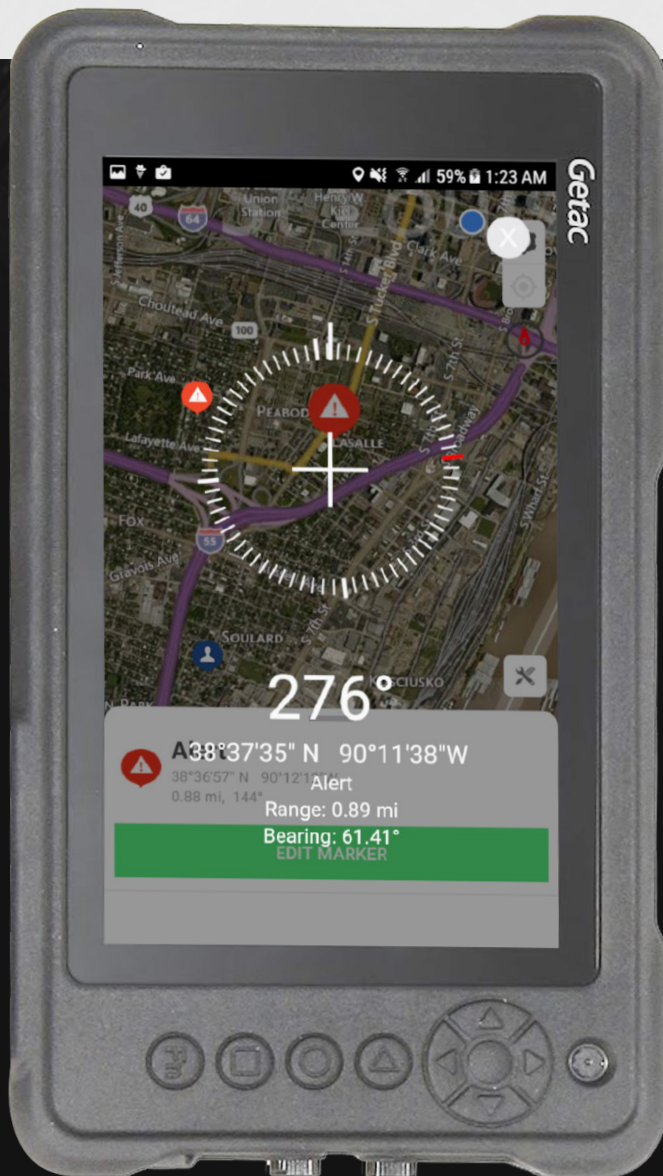




DELIVERING A CONNECTED COMMON OPERATIONAL PICTURE

In modern Military operations, there is no lack of data. The problem is that data typically resides in an Operations Center - not in the hands of the warfighter. Coolfire was designed to bridge this divide by aggregating, synthesizing and ultimately mobilizing these existing capabilities and investments.

Using commercial off-the-shelf mobile technology, Coolfire provides a simple, open standards solution that connects people, assets and information across any platform, leveraging data from any source, across any device, environment or network in real-time, providing situational awareness from the Border to the Battlefield.

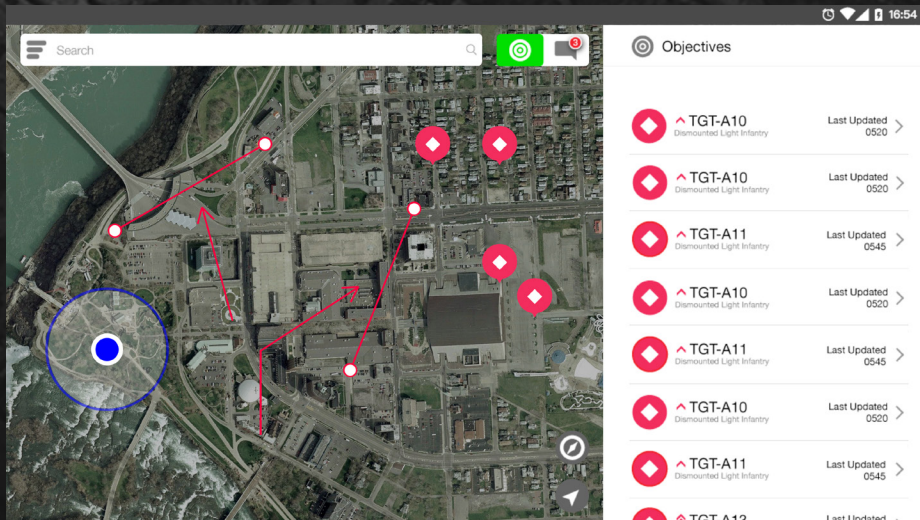


HOW DOES COOLFIRE WORK?

The Coolfire military solution is a lightweight system that integrates legacy enterprise data and services into an application engine capable of creating situational awareness for the individual and providing a common operational picture for teams. Because of its roots in Military and Special Operations, Coolfire is also capable of working in some of the toughest conditions imaginable with any network such as tactical radio, SATCOM or even newer technologies like Ultra Wideband (UWB).

KEY BENEFITS

- Provides a secure and robust communications architecture that can use chat, voice and other tools.
- Streams video and sensor data (Lidar, UGS, etc.)
- Puts all data into a geospatial context.
- Leverages existing investments and enhances their value by extending them to a mobile device.
- Visualizes, overlays and fuses data from several sources to create new insight.
- Creates a common operational picture for all users by synthesizing existing data & services with robust and secure communications.
- Empowers teams in any environment, even the furthest edge of the network.



COLLABORATION

- Shares critical data, location and even telestration through a real-time Common Operating Picture (COP) for all team members.
- Provides a secure and robust communications architecture that can use chat, voice and other tools.

VISUALIZATION

- Provides a single, shared view of the world (common operational picture) synthesizing all situational awareness for all users.
- Visualizes, overlays and fuses data from several sources to create new insight in a geospatial context.
- Streams video and other sensor data.
- Visualize mapping, external services, communication and collaboration.

INTEGRATION

- Leverages existing investments and enhances their value by extending them to a mobile device.
- Connects sensors, devices, radios, legacy software, etc.

COMMUNICATION

- Allows edge users to communicate peer to peer without a central server.
- Normalizes disparate devices and networks allowing radio, cellular and network users to communicate seamlessly.
- Allows for secure, multi-directional communications... input from the ground up.



SUPPORTED DEVICES

- Supports commercial-off-the-shelf mobile devices and is fully integrated to the Getac MX50.
- Coolfire and Getac MX50 platform are non-root dependent and support Information Assurance (IA) (NIAP CsfC certified) and data-at-rest requirements.
- MX50 is IP67, MIL-STD-810G and MIL-STD-461G certified.
- Hardware and mounting devices support body-worn, vehicle and dismounted options.